



Model: DW2000 & DW3000-NG
Serial #: See affected models

Oct. 25, 2021

Product Bulletin # DW-013 Rev 1

DW2000 & DW3000 NG NPL Motor Adjusters

Background

- The new generation non-permit load (NG-NPL) Canrig Commander™ Drawworks, requires a weld-on motor adjuster bracket with a bolt and jam nut. This assembly is used for motor alignment and to keep the motors from moving during transportation and operation.
- Current Canrig production units have removable pins with snap rings and tapped holes for the lockdown bolts. These pins were often used during the initial assembly and were at times, removed and misplaced or lost.

Issue

If the pins and hardware are removed, the motors can move and cause misalignment in the motor coupling, resulting in fatigue and/or premature seal failure. See Figure 1.

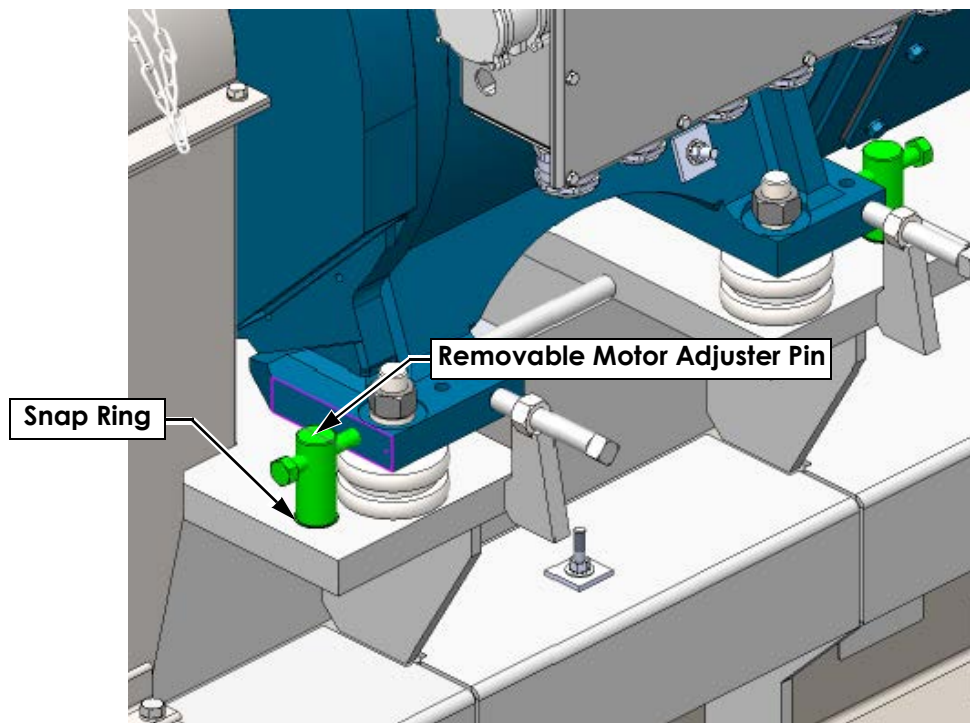


Figure 1: Removable motor alignment pins and hardware

Affected Models

DW2000 NG-NPL & DW3000 NG-NPL Canrig Commander™ Drawworks:

- DW2000 NG-NPL S/N: 80, 91, 109, 111–113, 115, 116-120, 121, 122 & 124.
- DW3000 NG-NPL S/N: 72, 73, 76, 79, 81, 83-90, 92-108, 110, 114 & 123.

Recommendation

1. Contact RIGLINE 24/7™ to order: Field Kit, Motor Adjuster Assy, Drwks (AY24596).
2. Remove existing pins, snap rings, and adjuster bolts. Replace with a non-removable, weld-on motor adjuster. See Figure 3 on page 3.



Note: The Motor Adjuster Field Kit (AY24596) contains the brackets, hex nuts, and set screws, enough to complete one drawworks skid upgrade.

Installation of Motor Adjuster Brackets

Refer to AY24596 (Figure 3 on page 3) for placement locations and welding for field installation of the motor adjusters.



Note: The four outer motor adjusters are to be used as is, as shown in Figure 2.

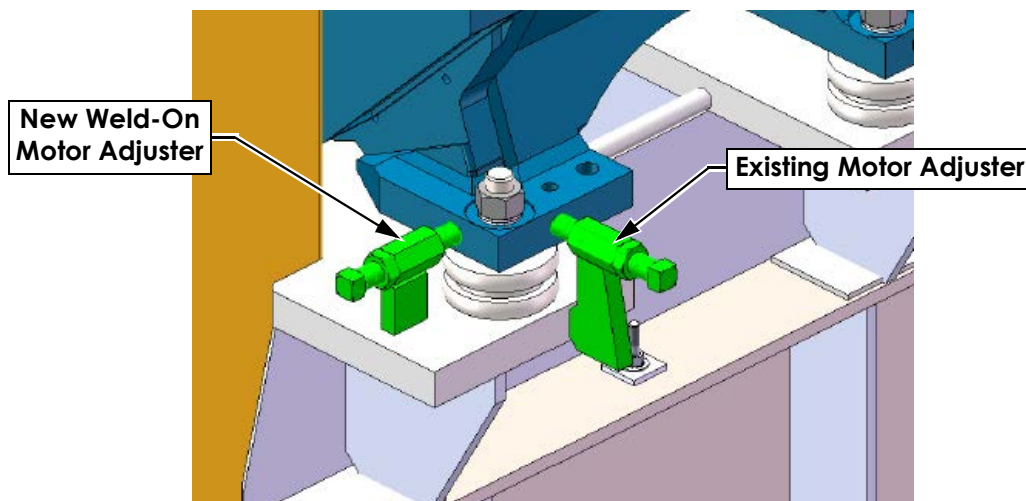


Figure 2: Weld-on motor adjuster installed

For Reference Only

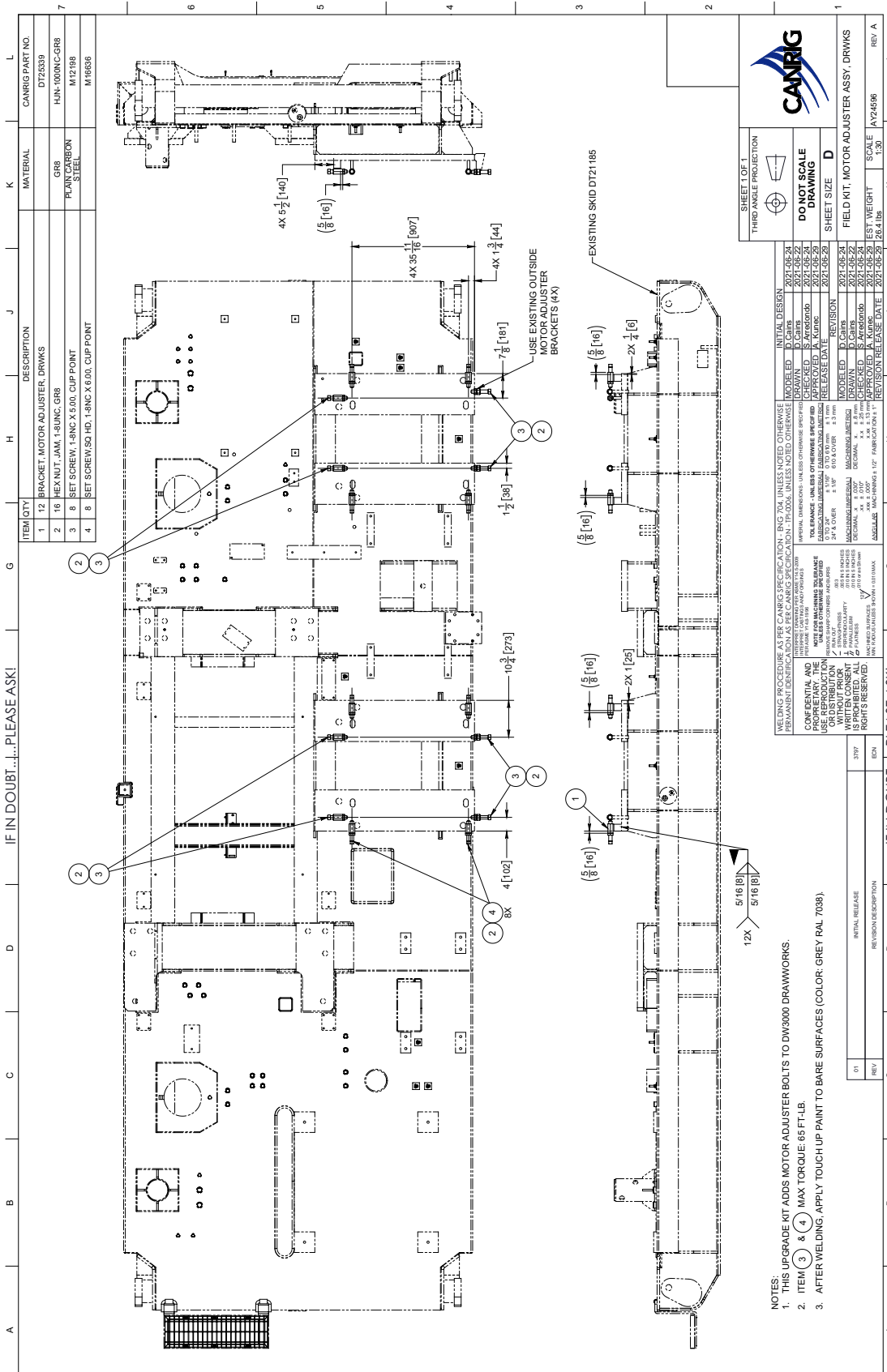


Figure 3: FIELD KIT, MOTOR ADJUSTER ASSY, DRWKS – AY24596